

Chapter 6: Community Facilities

The community facilities element identifies the location, character and extent of public and semi-public buildings, lands, and facilities.¹ Somerset County supports a broad range of community facilities, including schools, parks and recreation, public safety, libraries, health services, solid waste collection and disposal sites. The majority of these facilities are managed by the County as public amenities. A few, such as the hospital and other medical facilities, are private. Schools and Parks comprise a major portion of the County’s budget, and the principal facilities are included herein. Community facilities identified in this chapter are shown on Map 6-1.

6.1 Public Schools

The Somerset County Public School (SCPS) system is comprised of one pre-kindergarten (pre-k) through 1st grade school, two pre-kindergarten through 5th grade schools, second through 5th grade schools, one middle school, and two high schools. Altogether Somerset County contains 9 public schools with approximately 2,741 students enrolled. The districts minority enrollment is 60% and 57.2% of students are economically disadvantaged. Table 6-1 provides the 2022 enrollment of the public schools located within Somerset County in relation to the State Rated Capacity (SRC). The SRC is defined as “the maximum number of students that can be reasonably accommodated in a facility without significantly hampering delivery of the educational program”.

Somerset County Public Schools

“Serving a rural, diverse community rooted in rich traditional values, Somerset County Public Schools empowers all students to become innovative problem solvers and ethical leaders by providing engaging, technology enhanced instruction and balanced extra-curricular programs.”

Source: www.somerset.k12.md.us/

Note: In addition, Somerset County Technical High School offers a wide variety of career and technical education for the residents of Somerset County. Attendance is accounted for at both Crisfield Academy and High School and Washington Academy and High School. Therefore, the Somerset County Technical High School is not included in Table 6-1.

6.1.1 Projected School Enrollment

Most schools within the SCPS system fall within the 70-85% range in terms of current enrollment to maximum capacity. However, as shown in Table 6.1, the Somerset Intermediate School is nearing maximum capacity as assigned by their SRC.

According to the Maryland Department of Planning, by 2031 SCPS is projected to have 2,850 students enrolled.² This increase should not drastically affect the capability of SCPS to provide quality education to its constituents.

Table 6-1.

Current School Enrollment & State Rated Capacity					
School Name	Type	Grades	SRC	Enrollment	Percent of SRC
Princess Anne Elementary	Elementary	PreK-1	399	329	82%

¹ Maryland Department of Planning, Requirements of a Comprehensive Plan, © Copyright Maryland.gov, <https://planning.maryland.gov/Pages/OurWork/compplans/requirements.aspx>

² https://planning.maryland.gov/MSDC/Documents/school_enrollment/school_2022/Final-2022-School-Enrollment-Projections-Report.pdf

Current School Enrollment & State Rated Capacity					
School Name	Type	Grades	SRC	Enrollment	Percent of SRC
Deal Island School	Elementary	PreK-5	157	111	71%
Carter G Woodson Elementary	Elementary	PreK-5	636	492	77%
Greenwood Elementary	Elementary	2-5	526	458	87%
Ewell School	Elementary & Middle	2-7	92	5	1%
Somerset Intermediate School	Middle	6-7	404	401	99%
Crisfield Academy & High School	High	8-12	542	379	70%
Washington Academy & High School	High	8-12	787	566	72%

Source: https://planning.maryland.gov/MSDC/Documents/school_enrollment/school_2022/Final-2022-School-Enrollment-Projections-Report.pdf

Note: No students were enrolled in Ewell Elementary during the 2023-2024 school year.

6.1.2 Future Plans & Education Strategies

In 2021 the State of Maryland passed legislation that includes comprehensive changes to nearly every aspect of Maryland’s public education system. Named ‘[The Blueprint for Maryland’s Future](#)’, the plan includes increasing annual funding by over \$3.8 billion over the next 10 years in order to enrich student experiences, accelerate improvements to student outcomes, and improve the overall quality of education in Maryland. The Blueprint for Maryland’s Future is organized into five pillars. These include:

1. **Early Childhood Education**
2. **High Quality and Diverse Teachers and Leaders**
3. **College and Career Readiness**
4. **More Resources for All Students to Be Successful**
5. **Governance and Accountability**

Somerset County Public Schools (SCPS) has developed steering committees for each pillar to collaboratively address all components of the legislation, providing better opportunities for students and educators.³

In support of Early Childhood Education, Somerset County has increased Pre-K 3 and Pre-K 4 participation among eligible 3- and 4-year-olds.⁴ By utilizing expansion grants SCPS expect to continue increasing the inclusion of 3-year-old served within the county. In the 2020-2021 school year, SCPS provided two Pre-K 3 classrooms (one at Princess Anne Elementary and one at Woodson Elementary). In the 2021-2022 school year one additional classroom was added at Princess Anne Elementary School. In the 2022-2023 school year this increased to four classrooms (two at Princess Anne and two at Woodson). For the 2023-2024 school year SCPS plans to continue expansion through an additional Pre-K 3 classroom at Princess Anne Elementary.

All the schools in Somerset County Public Schools, with the exception of Deal Island Elementary and Ewell elementary have an almost even gender complement of 49% female and 51% male. In regard to race the student

³ <https://www.somerset.k12.md.us/o/scps/page/maryland-blueprint>

⁴ Somerset County Public Schools Initial Implementation Plan Template https://core-docs.s3.amazonaws.com/documents/asset/uploaded_file/3497/SCPS/2883137/19-Somerset_County_Public_Schools_3.15.23_Updated.pdf

complement is 46% black and 35% white. Other races make up a total of 19%. The district has 79% female and 21% male teachers.⁴ *Note: No students were enrolled in Ewell Elementary during the 2023-2024 school year.*

6.1.3 University of Maryland Eastern Shore

University of Maryland, Eastern Shore is a public institution that was founded in 1886. It has a total undergraduate enrollment of 2,233 (fall 2023) and total graduate enrollment of 611 (fall 2023). Its setting is rural, and the campus size is 1,100 acres. It utilizes a semester-based academic calendar.⁵ The campus is located at 11868 College Backbone Road, Princess Anne, MD 21853.



Figure 6-1: UMES Campus. Source: www.commonapp.org/explore/university-maryland-eastern-shore.

The primary building and land uses consist of Academic, Research, Residential, Student Services, Administration, Athletic facilities and Support. The rich natural character of UMES is due in large part to the variety and quality of open spaces. Existing open spaces can be categorized as formal campus greens, informal campus greens, athletics fields, and agricultural landscapes. Though the open spaces on the main campus are linked together by a series of pedestrian paths, greenways and smaller quadrangles, presently the east campus is edgeless, and the open spaces are undefined and poorly linked to the main campus. Most of the land is farm and forest. These natural features and rural qualities should be valued and respected as the university grows.⁶

The [UMES Executive Summary](#) gives recommendations for future as follows:

- Concentrate new building development in or near the historic campus core to complete unfinished quads and strengthen the close proximity of human-scaled living and learning spaces, providing more opportunities for interdisciplinary interaction.
- Create new quads, including one adjacent to the new Sciences building, that connect to the historic quad in a meaningful way.
- Plan landscapes that foster outdoor activity.
- Consider future development outside of the core for only strategic or very long-term uses.

⁵ <https://www.usnews.com/best-colleges/umes-2106#:~:text=University%20of%20Maryland%2C%20Eastern%20Shore%20is%20a%20public%20institution%20that,a%20semester%2Dbased%20academic%20calendar>.

⁶ <https://www.wcp.umes.edu/facilities/wp-content/uploads/sites/66/2023/06/20160524-UMES-Executive-Summary.pdf>

- Strengthen pedestrian connections to existing precincts outside of the campus core, including to off-campus housing.
- Remove and replace temporary structures by infilling their uses within existing or new structures.
- Renovations should address building conditions, functionality, as well as health and safety and environmental constraints (such as the floodplain, ADA access, etc.).
- Land use patterns should properly distribute residential and academic buildings as well as parking to create an active dynamic campus.
- Establish an athletics precinct on campus which is robustly connected with trails, open spaces, and bike paths.



Figure 6-2: UMES Campus Spatial Organization

6.2 Library and Information Services

The Somerset County Public Library system consists of the Crisfield, Princess Anne, and Ewell branch libraries. Services include Adult and Children’s Services Departments and programming along with public access to computers with internet which includes online databases and word processing programs.

6.2.1 Library and Information Services Future Plans

In January 2018, the Somerset County Library initiated a strategic planning process to create a long-term guide for library operations. Because of major changes in library operations since the previous plan was created in 2012 – among them, construction, and the subsequent doubling in usage of the Crisfield Library, formation of the Eastern Shore Library Consortium, and major impacts of technology on both operational matters and public services, this process focused on re-invention of library services.⁷

Future goals include but are not limited to:

- Continuing to develop the range of programs that the library offers the community.
- Bring programming schedules parallel between the Crisfield and Princess Anne Libraries.
- Diversify collections to include non-traditional materials.
- Increase the library’s presence in rural areas.
- Increase promotion of library resources.
- Assist in the promotion of community activities.
- Increase partnerships with local schools and other youth services organizations.
- Develop and implement formalized methodology for staff development.
- Address facility and furnishing needs.
- Expand the library’s technological capacity and formalize its methodology for acquiring both equipment and expertise.
- Ensure that the library schedule suits the needs of the community.
- Increase the range and scope of youth programs.
- Address the needs of ELL children and parents.
- Build teen patrons’ sense of investment in their community.

⁷ http://www.somelibrary.org/strat_plan.pdf

To address facility and furnishing needs Somerset County libraries are set to redeploy spaces to better suit patrons. Princess Anne intends to expand the teen and children’s spaces including furnishings and technologies. Princess Anne also intends to expand the study areas and small group meeting spaces. In addition, Princess Anne is exploring the possibilities for outdoor seating, additional parking, and better user accessibility for the restrooms.

6.3 Parks & Recreation

There are approximately 81,223 acres of preserved land throughout Somerset County. State and Federal land comprise 52,484 acres of the total protected lands acreage. Approximately 792 total acres are preserved for Public Recreational use. The data provided in the pie chart, Figure 6-3 was obtained from the [Maryland Protective Lands Dashboard](#). Various programs were used to protect these lands.

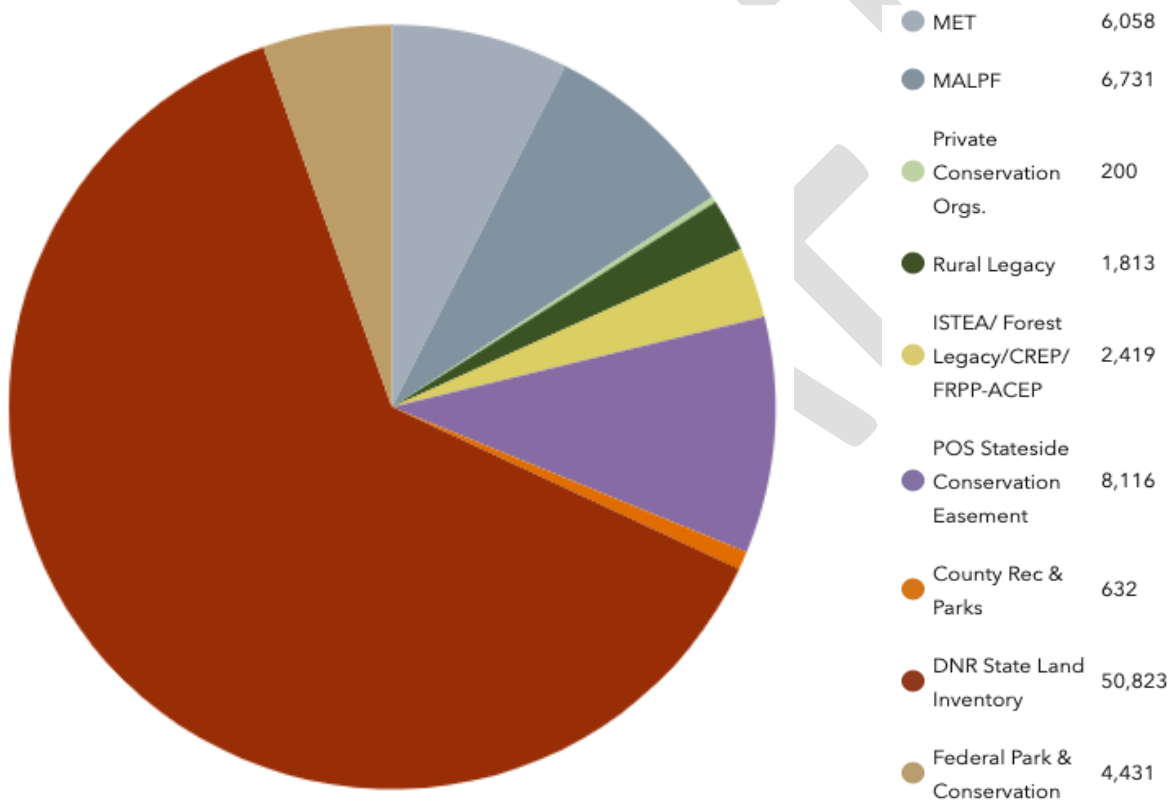


Figure 6-3: Protected Lands Acres by Category. Source: www.arcgis.com/apps/dashboards/Of3ffd3350b24b17bd3b8e1705af3df5

According to the Somerset County Land Preservation, Parks and Recreation Plan, the largest recreational county sites are the Great Hope Golf Course which holds 213 acres, the Raccoon Point Recreational Area which holds 216 acres, and the “Long” Centralized Athletic Complex which holds 46 acres. The Raccoon Point Recreational Area is used as a regional park for both active and natural resource-based recreation and the Centralized Athletic Complex, which opened in the summer of 2010, contains five multipurpose fields for recreational use.⁸ As shown on Table 6-2, various local entities own and operate recreation and resource lands with Somerset County, with the County itself being the largest local owner.

⁸ https://www.playsomersetmd.com/uploads/4/1/3/5/41354753/lpprp_formal_draft_7.15.22_.pdf

Table 6-2.

Acreage of Public Recreation and Resource Lands in Somerset County by Owner			
Owner	Recreation	Acres Resource	Total
Somerset County	598	-	598
Board of Education	160	-	160
Town of Princess Anne	21	-	21
City of Crisfield	5	-	5
Crisfield Housing Authority	8	-	8
Total Local	792	-	792
State	-	48,053	48,053
Federal	-	4,431	4,431
Total State and Federal	3,794	52,484	-
Grand Total*	4,586	52,484	-

Source: www.playsomersetmd.com/uploads/4/1/3/5/41354753/lpprp_formal_draft_7.15.22.pdf

6.3.1 Glenn Ward Ballpark, Crisfield

Glenn Ward Ball Field is a recreational area located on Old State Road in Crisfield, MD. Situated nearby is the Mariners Cemetery and the Mariners United Methodist Church. Glen Ward Ballpark contains one softball field with lights and dugouts, a concession stand with restrooms, a small basketball court, and a press box. The field is utilized currently to host recreational girls’ softball games and by the Lion’s Club for special events such as their annual fundraising tournament.

For future use the county is working with the local Little League Chapter to use the venue for Junior and Senior league competition while also initiating programming to serve adults interested in both Men’s and Coed Softball. There are also plans to regrade the ball field surface and parking lot alongside adding a playground.

6.3.2 Upper Hill Park, Westover

Upper Hill Park is a recreational area located on Jones Factory Road in Westover, MD. Situated nearby is the United States Postal Service and the Saint Stephens Cemetery. Upper Hill Park contains playground equipment, a pavilion with picnic tables, and one asphalt basketball court.

Future plans of improvement include continued maintenance, a complete overhaul of the playground equipment, resurfacing the basketball court, and the implementation of additional playground equipment. The park is now also included in the Trail Program with hopes to increase exposure and use.

6.3.3 Centralized Athletic Complex, Westover

The Centralized Athletic Complex is an athletic recreational facility located on Sam Barnes Road in Westover, MD. Situated nearby is the Six L’s Packing company and the Poultry Equip Services. The facility consists of two full sized soccer/field hockey fields, three small sized multi-purpose fields, a concession stand with restrooms, and a pavilion with ten picnic tables.

Future plans include expanding the property to include two more full sized soccer/field hockey fields for a total of four full sized fields for use.

6.3.4 Great Hope Golf Course, Westover

The Great Hope Golf Course is an 18-hole golf course located on Crisfield Highway in Westover, MD. Situated nearby is the Somerset County Sheriff's Office, Somerset Intermediate School, Somerset Technical High School, and the Board of Education. The facility consists of a pristine 18-hole golf course, a restaurant, and club house with a store, a pavilion with picnic tables, and walking trails alongside the course.

Future plans include the ongoing creation of the nature trail that connects to the adjacent Somerset County Public Schools property, opening the venue to patrons for picnics, walking, concerts, and other non-golf related activities, and a clubhouse renovation which includes a new HVAC system, carpet, and paint.

6.3.5 Raccoon Point Park, Westover

The Raccoon Point Park is a recreational waterfront park area located on Revells Neck Road in Westover, MD. Situated nearby is the Raccoon Point Studios. This county parks facility includes a strand of bayside beach, kayak/canoe soft launch, a pavilion with a BBQ grill, and portable toilet facilities.

Future plans include the creation of a "Friends of Raccoon Point" group with the intention to police the park and address current issues along with bi-annual cleanup days for the park's maintenance. Raccoon Point has also been included as a destination in the trail initiative.

6.3.6 Princess Anne Little League Complex, Princess Anne

The Princess Anne Little League Complex is a recreational athletic facility located on Maple Street in Princess Anne, MD. Situated nearby is Ocean Hwy and the Somerset County Office Complex. This athletic facility consists of one junior league baseball field, two minor league fields, and one tee-ball field. There is also a concession stand with bathrooms along with press boxes.

Future plans for the facility include a new turf management plan and large brush/undergrowth removal with tree pruning to increase visibility from the road and the overall attractiveness of the facility. Future plans also include opening the facility to be rented/used by other baseball programs for tournaments and practices, partnering with Somerset County Public Schools for their middle school baseball and softball teams, and partnering with both local little leagues to combine resources for inter-league and all-star level play.

6.3.7 County Office Complex Indoor Gymnasium, Princess Anne

Also known as the Old Washington High Gymnasium, the County Office Complex indoor gymnasium is a multi-sport indoor recreational facility located on Somerset Avenue in Princess Anne, MD. The Princess Anne Little League Complex is also located near this facility. The facility consists of one multi-sport court that can accommodate indoor soccer, indoor field hockey, basketball, and volleyball. The facility also contains restrooms.

Future plans for the facility include embracing the area as an indoor walking opportunity for walking during the business day for county employees and continuing the implementation of a wide range of rental opportunities to private groups and teams within and outside the county.

6.3.8 Mt. Vernon Park, Princess Anne

Mt. Vernon Park is a recreational park and playground area located on Mt. Vernon Road in Princess Anne, MD. Situated nearby is the Asbury United Methodist Church and the Websters Cove Boat Ramp. Mt. Vernon Park is less than one mile from the mouth of the Wicomico River and Webster's Cove Marina boat ramp. This recreational area consists of playground equipment, a pavilion with access to electricity, and picnic tables.

Future plans include the addition of a new basketball court, pavilion upgrades, and new rubber mulch material to be added to the playground areas. There are also plans to include the park within the trail initiative to enhance community usage along with introducing improved workout stations at the park.

6.3.9 Terrapin Run Recreational Trail, Crisfield

The Terrapin Run Trail is a recreational trail established in 2021 with two trailheads, one located on Hinman Lane in Crisfield, MD and the other located on Marion Road in Marion, MD. The trail stretches 4.5 miles and is fully paved making it suitable for walking and cycling. Leashed pets are welcomed. Additional project phases are planned, which will ultimately link trails together, eventually creating one long trail alongside of MD Route 413.

Note: In addition to the parks and recreation information included above, Chapter 7 Transportation, includes active and pedestrian transportation, specifically human powered mobility such as, biking, walking, or rolling.

6.3.10 Janes Island State Park, Crisfield

Janes Island State Park is located just outside of Crisfield, MD. The mainland portion of the park includes 103 campsites, rental cabins, a lodge, picnic areas, pavilions, and the boat ramp and marina. The island portion of the park, Janes Island, includes over 2,900 acres of saltmarsh, over 30 miles of water trails and miles of isolated pristine beaches. This area of the park offers ADA accessible restrooms and four accessible campsites. The park store, nature center, picnic pavilions, recreation area, fish cleaning station and dock area are also ADA accessible.

Note: In addition to the parks and recreation information included above, Chapter 7 Transportation, includes active and pedestrian transportation, specifically human powered mobility such as, biking, walking, or rolling.

6.4 Public Safety

The Somerset County Department of Emergency Services has the mission of coordinating the resources necessary to respond to an emergency. On a daily basis this occurs through the 9-1-1 Emergency Communications Center. For large scale events the Emergency Operations Center (EOC) coordinates emergency management services. To protect lives and property within Somerset County, it is the responsibility of this office to prepare the County and the public to manage activities before, during, and after the impact of natural and technological disasters.⁹

The EOC is located at 11916 Somerset Avenue, Room 120, Princess Anne, Maryland, 21853. The back-up EOC is located on 8928 Sign Post Rd, Westover, MD 21871. When the Emergency Operations Center is fully activated the EOC staff includes the Director of 911/Emergency Management, County Commissioners President, County Administrator, and representatives from the Board of Education, Health Department, Social Services, Law

⁹ <http://www.somerset911.org/cd.html>

Enforcement, Public Works, County Roads, State Highway Administration, Red Cross, RACES, the United States Coast Guard, National Guard, Fire and EMS providers and many others.

Somerset County utilizes an emergency notification system, Code Red Emergency Alerts. That way, in an emergency, you can be notified by Somerset Emergency Services in the event of emergency situations or critical community alerts. Examples include evacuation notices, bio-terrorism alerts, boil water notices, and missing child reports.¹⁰

6.4.1 EMS & Fire Departments

Somerset Central dispatches 8 fire companies and two ambulance companies. All are entirely volunteer staffed except for Station 5 - Princess Anne Fire Department/EMS which employs an Advanced Life Support (ALS) provider 24 hours a day. Emergency Service facilities located in Somerset County include the Princess Anne Fire & EMS and the Lower Somerset County Ambulance & Rescue Squad. Station 1, Ewell Fire Department and Station 7, Tylerton Fire Department serving island communities, dispatch EMS personnel to all medical calls and arrange for patient transport by boat or by the Maryland State Police helicopter to either McCready Memorial Hospital in Crisfield or Tidal Health in Salisbury on the mainland. Due to the distance from the ambulance station in this largely rural county, Station 3 - Marion Fire Department, Station 4 - Deal Island Fire Department, Station 6 - Mt Vernon Fire Department and Station 9 - Fairmount Fire Department respond an EMS crew on every medical call in their jurisdictions. Table 6-3 lists each Emergency Service facility within the county along with its location.

Table 6-3.

Emergency Medical Service Facilities	
Name	Location
Station #5 Princess Anne Fire & EMS Department	11794 Somerset Ave, Princess Anne, MD 21853
Station #6 Lower Somerset County Ambulance & Rescue	2 Mill Lane Crisfield, MD 21817

Source: <https://www.somerset911.org/fireems.html>

Fire Departments located in Somerset County include the Ewell Volunteer Fire Department, the Crisfield Volunteer Fire Department, the Marion Volunteer Fire Department, the Deal Island – Chance Volunteer Fire Company, the Princess Anne Fire & EMS, the Mt Vernon Volunteer Fire Department, the Tylerton Volunteer Fire Department, and the Fairmount Volunteer Fire Department. Table 6-4 lists each Fire Station and its location.

Table 6-4.

Fire Department Facilities		
Station #	Name	Location
1	Ewell Fire Department	3994 Smith Island Rd, Ewell MD
2	Crisfield Fire Department	600 West Main St, Crisfield MD
3	Marion Fire Department	28390 Crisfield Marion Rd, Marion MD
4	Deal Island/Chance Fire Department	10090 Deal Island Rd, Deal Island MD
5	Princess Anne Fire & EMS Department	11794 Somerset Ave, Princess Anne MD
6	Mt Vernon Fire Department	27740 Mt Vernon Rd, Princess Anne MD
7	Tylerton Fire Department	21140 Tuff St, Tylerton MD
9	Fairmount Fire Department	27407 Fairmont Rd, Fairmount MD

Source: <https://www.somerset911.org/fireems.html>

¹⁰ https://www.somersetmd.us/departments/departments - a - m/emergency_services.php

6.4.2 Law Enforcement

Law enforcement facilities in Somerset County include the Crisfield Police Department, the Princess Anne Police Department, the Somerset County Sheriff’s Office, and the Maryland State Police – Barrack X. Table 6-5 below lists each law enforcement agency within the county along with its location.

Table 6-5.

Law Enforcement Facilities	
Name	Location
Somerset County Sheriff	30426 A Sam Barnes Road, Westover, MD 21871
Crisfield Police	319-A West Main Street, Crisfield, MD 21817
Princess Anne Police	11780 Beckford Avenue, Princess Anne, MD 21853
University of MD Eastern Shore Police	30737 University Blvd. South Princess Anne, MD 21853
Maryland State Police Barrack X	30581 Perry Rd, Princess Anne, MD 21853

Source: https://www.somersetmd.us/government/sheriff_s_office.php

6.4.3 Corrections

The Somerset County Detention Center is responsible for the protection of the citizens of Somerset County, Maryland by providing a safe, secure, and humane place of confinement for those persons committed by any Judicial System. The Detention Center is operated in accordance with applicable Federal, State and local laws. The detention center is located at 30474 Revells Neck Road in Westover, Maryland.

The Department of Public Safety and Correctional Services protects the public, its employees, and detainees and offenders under its supervision. Located in central Somerset County, the Eastern Correctional Institution opened in 1987. The Institution is a medium-security prison for men built as two identical compounds (East and West) on a 620-acre tract. It has a pre-release unit, a minimum-security annex for 610 inmates, and an operating capacity of 2,665 medium security inmates. The facility is located at 30420 Revells Neck Road in Westover, Maryland.

6.5 Hospital & Public Health

Located within Somerset County, the Tidal Health McCready Pavilion, formerly known as the Edward W. McCready Memorial Hospital serves as a 24/7 emergency care facility. In addition to emergency care this facility also provides physical medicine and rehabilitation, inpatient skilled nursing care, assisted living, medical imaging, and outpatient laboratory services. The campus itself also houses physician offices including Behavioral Health, Gynecology, and Primary Care. The campus is located at 201 Hall Hwy, Crisfield, MD 21817.¹¹ In 2019 McCready Health merged with the Tidal Health to combat the overall decline in hospital usage within Somerset County and the facilities deterioration. This merge ensured that healthcare services in Somerset County would continue uninterrupted.¹²

¹¹ <https://www.tidalhealth.org/our-locations/tidalhealth-mccready-pavilion>

¹² <https://www.healthleadersmedia.com/finance/mccready-health-join-peninsula-regional>



Figure 6-4: Image of Tidal Health – McCreedy Pavilion. Source: <https://www.tidalhealth.org/our-locations/tidalhealth-mccready-pavilion>

In addition to the hospital, the Somerset County Health Department serves the public by preventing illness, promoting wellness, and protecting the health of our community. The Health Department is located at 8928 Sign Post Road in Westover, Maryland. Programs and services offered by the Health Department include:

- Behavioral Health Authority
- Community Health
- Emergency Preparedness
- Homeless Alliance for the Lower Shore Continuum of Care
- Medical Assistance Transportation
- Preventative Health Services
- Vital Records

Other medical facilities located in Somerset County include:

- Lower Shore Immediate Care (12302 Somerset Avenue, Princess Anne, Md 21853)
- Chesapeake Health Care Complex (12137-12615 Elm Street, Princess Anne, Md 21853)
- Princess Anne Family Practice (30434 Mt. Vernon Road #1400, Princess Anne, Md 21853)

6.6 Solid Waste and Disposal Sites

The Somerset County Division of Solid Waste and Drainage is responsible for landfilling, recycling and mulching operations, as well as improving drainage. The Solid Waste & Drainage Complex, which is located on James Ring Road in Westover, includes an administrative office, shop, equipment shed, break room, storage sheds, recycling building, scale house, landfill, borrow pits (BP), leachate storage tank, and mulching center (MC). There are also 6 transfer stations (TS), 4 county dumpsters (D), and an incinerator (I) located throughout the county.

Table 6-6.

Solid Waste and Drainage Department Facilities	
Name	Location
Landfill/Transfer Station	8716 James Ring Road, Westover, MD 21871
Mt. Vernon Transfer Station	29012 Mt. Vernon Road, Princess Anne, MD 21853
Deal Island/Chance Transfer Station	24019 Deal Island Road, Deal Island, MD 21821
Crisfield Transfer Station	4941 Crisfield Highway, Crisfield, MD 21817
Dublin/Costen Transfer Station	8405 Wallace Taylor Road, Pocomoke, MD 21851
Tylerton Transfer Station	Marshall Street (Dock), Tylerton, MD, 21866
Smith Island Incinerator	3780 Smith Island Road, Ewell, MD 21824

Source: Somerset County Solid Waste and Drainage Department, https://www.somersetmd.us/departments/departments - n - z/solid_waste_and_drainage.php

Most of these facilities are in the Princess Anne and Westover areas. Accepted recyclables include aluminum cans, anti-freeze, batteries, Bi-metal cans, cardboard, clothing, glass, magazines, newspaper, oyster shells, plastic, scrap metal, waste oil, and yard waste.

According to the [2020 MD Solid Waste Management and Diversion Report](#), the Somerset County Landfill has a permitted capacity of 1,610,000 Cubic Yards (CY). As of 2020, 1,031,764 CY of that space has been used. Therefore, the remaining capacity of the Landfill is 578,236 CY. The MD Solid Waste Management and Diversion Report finds that the maximum capacity of this landfill will be reached by 2032.¹³

6.6.1 Solid Waste Future Plans

In review of the [Solid Waste and Drainage Division Strategic Plan](#), specifically the Strengths, Weaknesses, Opportunities, and Threats (SWOT) analysis, several issues and opportunities for the future were identified. One of these issues include capacity limitations of the landfill and borrow pit, therefore potential for landfill and borrow pit expansion was identified.

Note: Water and wastewater infrastructure is included in Chapter 9 Water Resources of this plan and in the County Water and Sewerage Plan.

6.7 Broadband Service

Broadband is defined as a high-capacity transmission technique using a wide range of frequencies, which enables a large number of messages to be communicated simultaneously. According to the FCC, this transmission must occur at a minimum of 25 Mbps download and 3 Mbps upload.

Over the past several years, Somerset County has undertaken an effort to ensure that all County residents and businesses have access to high-speed, affordable broadband services— but service gaps persist. The FCC’s [National Broadband Map](#) shows areas and addresses in the County in relation to their level of broadband access and level of funding opportunities. The mapping platform includes the extent and availability of both fixed and mobile broadband services. As of June 2023, the County has greater coverage of mobile broadband than fixed broadband; fixed broadband services are still lacking in remote portions of the county. The National Broadband Map is updated twice annually.

¹³ www.mde.maryland.gov/programs/land/Documents/MD%20Solid%20Waste%20Management%20and%20Diversion%20Report%20CY2020%20%281%29.pdf

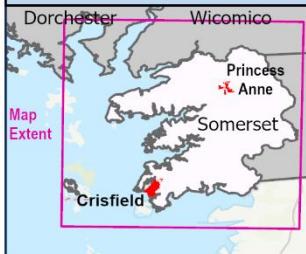
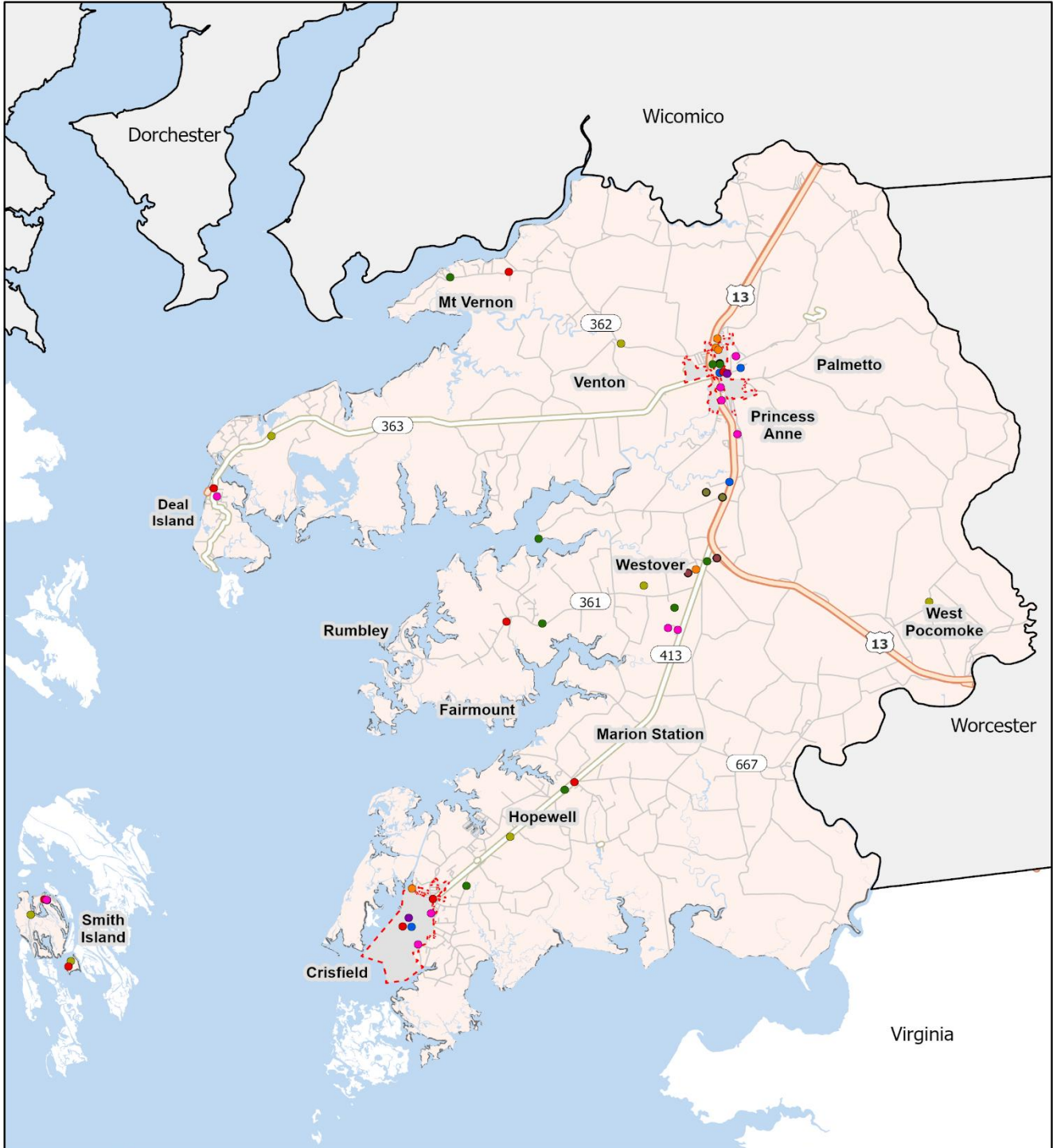
Unserved portions of Somerset County face the same challenges as other rural communities in attracting broadband infrastructure investment. Nationwide, even in the most affluent rural and semi-rural areas—from the horse farms around Lexington, Kentucky, to the ski communities outside of Aspen and Telluride, Colorado, to the resort areas on the Chesapeake Bay—the economics simply do not exist for rural broadband deployment absent substantial government funding. The private sector will not build costly infrastructure to reach all homes and businesses in low-density areas simply because the potential return on investment is insufficient to justify the investment. The same dynamics apply to virtually all areas of rural infrastructure development. In the case of broadband, the issues are starker because broadband is traditionally thought of as an area of private investment, rather than public investment. The challenging economics result from the lack of density of homes—and, in many cases, the fact that homes are located on large parcels of land; long driveways or setbacks from the road greatly increase the cost to deploy wired infrastructure to those homes.¹⁴

Somerset County is currently in a growth and expansion period of its broadband services and capabilities. The County participates in a Local Government Broadband Collaboration Workgroup, of which County IT Economic Development, and Planning and Zoning are involved with. The point of contact appointed for this workgroup is the county engineer. Historically, the County only had two internet service providers (ISPs) in the area: Spectrum/Charter covered the Crisfield area and Comcast/Xfinity covered the Princess Anne, Deal Island, Mt. Vernon, Eden and Pocomoke areas. In the past, the rest of the County was considered “too rural” to be profitable. However, in recent years there has been interest from the federal and state governments to increase broadband services to underserved areas, and as such, funding opportunities to expand broadband are now available. The existing ISPs have taken advantage of the new funding, and Spectrum/Charter obtained state [Network Infrastructure](#) grant funding to expand from Crisfield toward US Route 13, which focuses on the lower third of the county. Choptank Electric got into the broadband business by creating Choptank Fiber and obtained state Network Infrastructure funding to expand out from Princess Anne, which covers approximately a third of the county. Comcast had little interest in expanding as they already had a third of the county. Simple Fiber, a start-up company that focuses on small municipalities, obtained a Rural Maryland Prosperity Investment Fund (RMPPIF) grant from the Rural Maryland Council to expand near downtown Princess Anne. Talkie Fiber, a start-up company on the upper shore, received a federal Rural Digital Opportunity Fund (RDOF) grant to serve extremely remote areas of the county. Verizon has recently applied for a state Network Infrastructure grant to focus on Smith Island.

In order to incentivize broadband expansion, the county allocated \$1M of its federal American Rescue Plan Act (ARPA) funds toward broadband. Spectrum/Charter received \$250K and Choptank Fiber received \$750K. Somerset County recently applied for a state Homestretch grant to reach properties with long driveways and are awaiting approval. The county is partnering with a few additional ISPs, and later anticipates applying for a state Broadband Equity, Access and Deployment (BEAD) grant to reach the remaining unserved and underserved properties which will achieve its ultimate goal of serving all county residents.

Note: Community facilities, not including broadband, as identified in this chapter are, shown on Maps 6-1 thru 6-5.

¹⁴ <https://cms7files1.revize.com/somersetcountymd/Broadband%20Strategic%20Plan%20-%20Somerset%20County%20-%20Final%20-%2020200717.pdf>



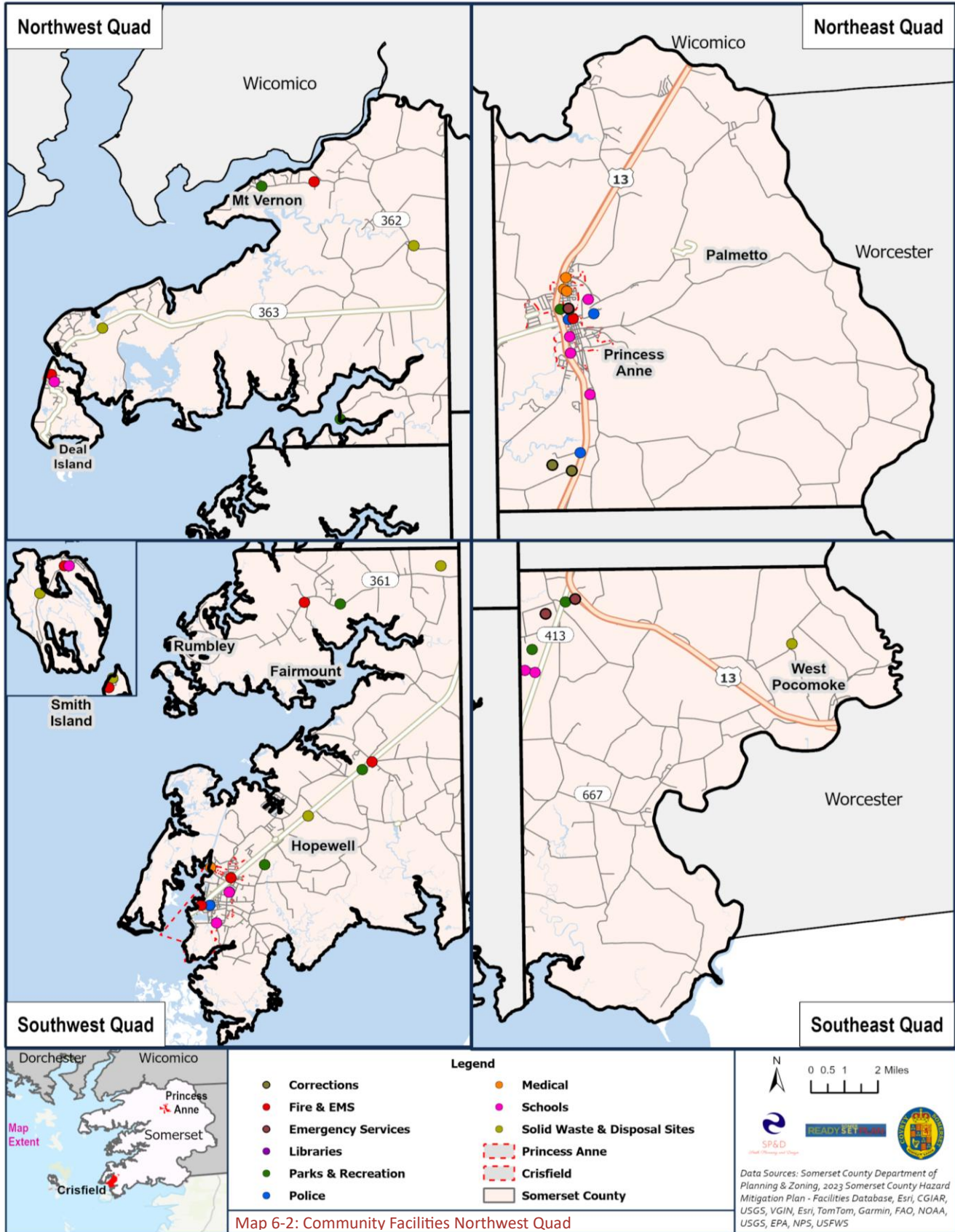
Legend

- Corrections
- Medical
- Fire & EMS
- Schools
- Emergency Services
- Solid Waste & Disposal Sites
- Libraries
- - - Princess Anne
- Parks & Recreation
- - - Crisfield
- Police
- Somerset County

0 0.5 1 2 Miles

Data Sources: Somerset County Department of Planning & Zoning, 2023 Somerset County Hazard Mitigation Plan - Facilities Database, Esri, CGIAR, USGS, VGIN, Esri, TomTom, Garmin, FAO, NOAA, USGS, EPA, NPS, USFWS

Map 6-1: Community Facilities Countywide



Chapter 6: Community Facilities Goals & Implementation Strategies

Goal 6.1

Provide appropriate community facilities, services, and amenities.

Strategies

- A. Encourage public/private partnerships to support development of community facilities and services.
- B. Provide for the protection and adaptability of public facilities and resources in the face of climate change and sea level rise.
- C. When development or redevelopment occurs, provide public access to waterways where appropriate and feasible.
- D. Promote existing public access to waterways, specifically existing thirteen waterway facilities.
- E. Upgrade existing waterway access locations and facilities, such as boat ramps, docks, and kayak launches.
- F. Add a fishing pier adjacent to existing pier in the Rumbley community.
- G. Identify opportunities for additional public access to waterways at appropriate locations.
- H. Encourage and/or support a new or upgraded Princess Anne Library.
- I. Identify new locations for emergency services EMS and fire substations in areas of the County that lack these services and therefore experience longer response times, on average.
- J. In consideration of landfill capacity, expand landfill.
- K. Establish additional compost site for the collection and processing of yard waste in both the northern and southern areas of the County.
- L. Target demolition waste for recycling to better support LEED building process.
- M. Cooperate with municipal governments to avoid duplication of services and continue to promote the use of shared facilities and services.
- N. In cooperation with the Somerset County Hazard Mitigation Plan, review action items and projects related to public facilities located in high hazard areas.
- O. Identify gaps in existing health care services within Somerset County and identify potential opportunities for regional collaboration and enhancements.

Goal 6.2

Provide infrastructure and services to support economic development.

Strategies

- A. Promotes upgrades to the existing Princess Anne Civic Center to be a state-of-the-art facility.
- B. Look for opportunities to connect trail systems both locally and regionally to create additional ecotourism opportunities.
- C. Identify future trails/paths to connect residential neighborhoods with shopping centers and employment centers.
- D. Strongly support improvement and dedication of lands for public trails and paths as part of development plans.

Goal 6.3

Evaluate and implement the strategies and capital improvements in the Land Preservation, Parks, and Recreation Plan (LPPR.)

Strategies

- A. Promote the economic, cultural, health, and environmental benefits of outdoor recreation and conservation of natural lands. Seek to increase the public’s understanding of these benefits to enhance interest and participation in recreating outdoors in the County.

Goal 6.4

Create a connected, county-wide network of greenways, parks, trails, and natural areas.

Strategies

- A. Expand and connect forests, farmlands, and other natural lands as a network of contiguous green infrastructure.
- B. Build upon and establish new greenways and trails along waterways.
- C. Develop a county-wide Green Infrastructure Plan. Establish a robust stakeholder group to guide this process.

Goal 6.5

Support efforts to identify landfill facility expansion.

Strategies

- A. Coordinate efforts with other involved County departments.

Goal 6.6

Expand broadband infrastructure to provide coverage throughout Somerset County.

Strategies

- A. Continue to support Choptank Fiber with broadband expansion in the northern part of the County with previously awarded grant money.
- B. Continue to support Spectrum with broadband expansion in the southern part of the County with previously awarded grant money.
- C. Continue to support Simple Fiber with broadband expansion in Princess Anne with previously awarded grant money.